

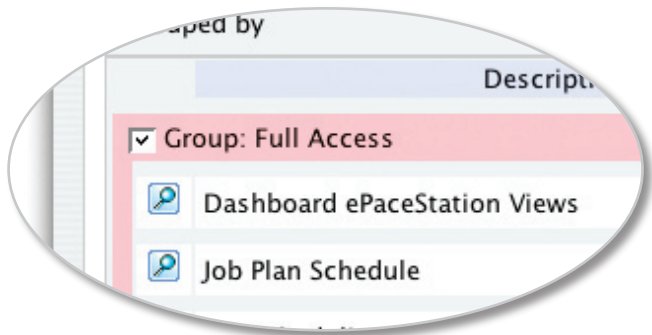
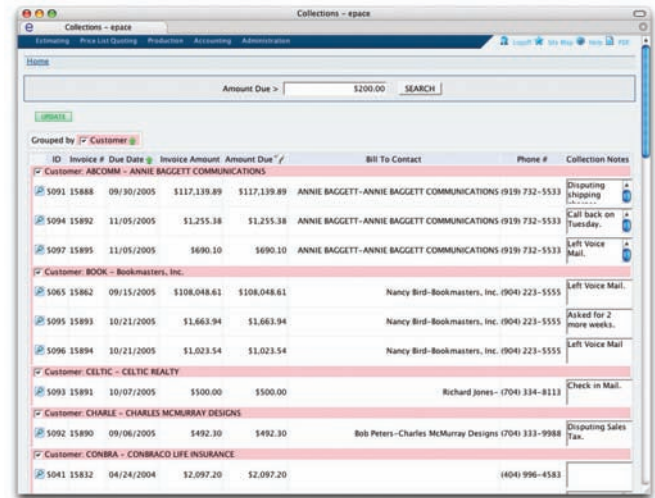


## EPACESTATION

The ePaceStation™ module is an innovation from Pace Systems Group that offers users a unique tool to sort, manage, manipulate and view large sets of data. This easy-to-use module enables you to monitor, view and even edit information on a real-time basis directly out of the database, and includes the following features and benefits:

### **Supports personalized queries of system data that your users can edit and save**

This revolutionary module gives each person in your operation a personal view of the system data. These views can be rearranged, organized and then saved in the system for later review.

ID	Invoice #	Due Date	Invoice Amount	Amount Due	Bill To Contact	Phone #	Collection Notes
<b>Customer: ABCOMM - ANNIE BAGGETT COMMUNICATIONS</b>							
5091	15888	09/30/2005	\$117,139.89	\$117,139.89	ANNIE BAGGETT-ANNIE BAGGETT COMMUNICATIONS (919) 732-5533		Disputing Invoicing
5094	15892	11/05/2005	\$1,255.38	\$1,255.38	ANNIE BAGGETT-ANNIE BAGGETT COMMUNICATIONS (919) 732-5533		Call back on Tuesday
5097	15895	11/05/2005	\$690.10	\$690.10	ANNIE BAGGETT-ANNIE BAGGETT COMMUNICATIONS (919) 732-5533		Left Voice Mail
<b>Customer: BOOK - Bookmasters, Inc.</b>							
5065	15862	09/15/2005	\$108,048.61	\$108,048.61	Nancy Bird-Bookmasters, Inc. (904) 223-5555		Left Voice Mail
5095	15893	10/21/2005	\$1,663.94	\$1,663.94	Nancy Bird-Bookmasters, Inc. (904) 223-5555		Asked for 2 more weeks
5096	15894	10/21/2005	\$1,023.54	\$1,023.54	Nancy Bird-Bookmasters, Inc. (904) 223-5555		Left Voice Mail
<b>Customer: CELTIC - CELTIC REALTY</b>							
5093	15891	10/07/2005	\$500.00	\$500.00	Richard Jones - (704) 334-8113		Check in Mail
<b>Customer: CHARLE - CHARLES MCMURRAY DESIGNS</b>							
5092	15890	09/06/2005	\$492.30	\$492.30	Bob Peters-Charles McMurray Designs (704) 333-9988		Disputing Sales Tax
<b>Customer: CONBRA - CONBRACO LIFE INSURANCE</b>							
5041	15832	04/24/2004	\$2,097.20	\$2,097.20		(404) 996-4583	

*The ePaceStation™ Inquiry Screen*

“ePaceStation™ enables you to create a report or personal view of the system data quickly and easily.”

### **Enables users to locate and manage real-time information directly out of the ePace system on a dynamic report**

Data access is real time and can be refreshed with one simple click of the mouse. Similar to a report writer, ePaceStation™ enables you to create a report or personal view of the system data quickly and easily. All of the database tables are already linked, and include common sense field names. The database also contains all user-defined fields and their translations.



## EPACESTATION

### **Provides quick, intuitive query creation and the ability to group and filter results**

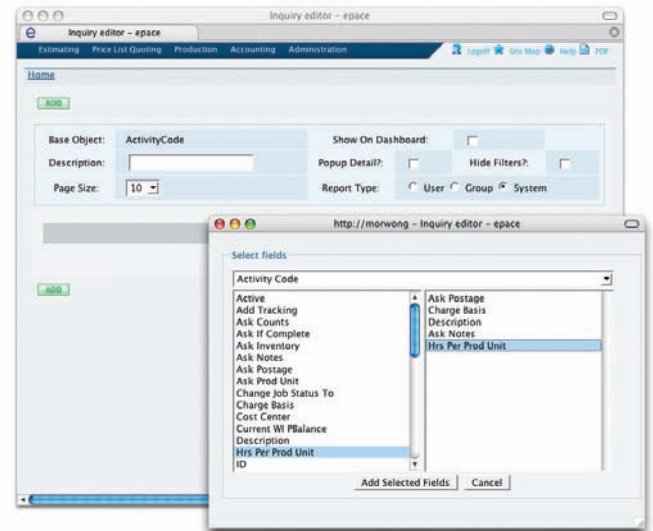
You can set up parameters to build, sort, group, edit, and filter results by any field in the database. For example, you can monitor the status of thousands of jobs on some screens, and ePaceStation™ enables you to create a filter and display only the jobs with a certain status, key date in a range of dates, or amount.

### **Enables users to edit system information directly through the ePaceStation™ query results**

Even better than a report writer, the system enables you to edit any information directly on the screen. The security system is totally integrated to allow users to view only the information they can normally see in the application, and edit only those fields they can normally access. Thus, ePaceStation™ provides global editing capabilities with matched security.

### **Allows exports into Microsoft® Excel® or generation as a PDF for further data analysis**

You can export any view from ePaceStation™ to Microsoft® Excel®, or generate a PDF file for further analysis or manipulation. You can also save the view as private, public or group-specific, so others can share in the information that ePaceStation provides.



*The Inquiry Editor Screen*

### **Offers direct access to system information across all modules to facilitate quick and efficient decision making**

You can move directly from ePaceStation™ into other system modules such as the Job Control Center, Inventory, or Accounting for the object represented in the view. With views, you can manipulate and monitor the same data in real time, then use the drill-down on any record to get complete detailed information. This enables you to navigate easily to items of interest and make additional notes, or view additional information to make decisions quickly and efficiently. You can also save multiple views to create favorites, links, or shortcuts and view information more quickly. Sample views include the production plan for a cost center, the jobs due out in the next two days, the COD shipments that need invoices, the customers on credit hold, or the proofs due back today.