

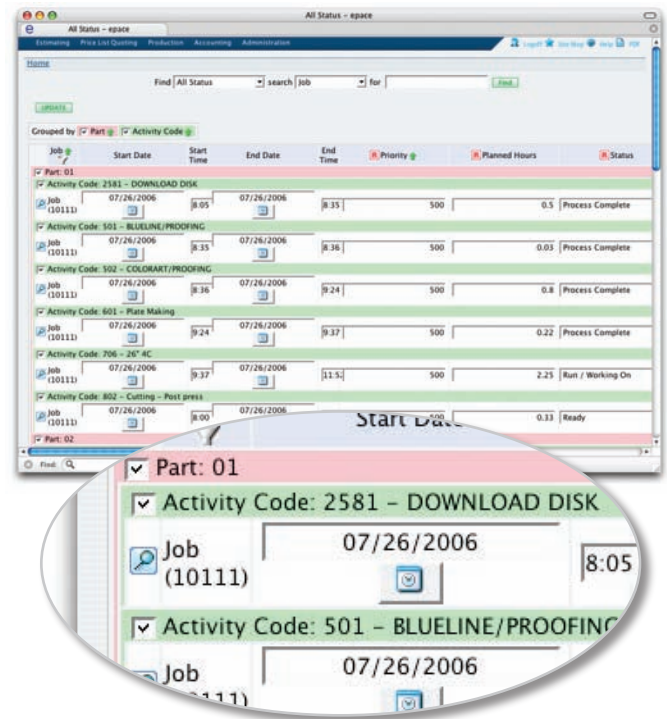


JOB PLANNING

The Job Planning add-on module enables ePace to display, organize and sort jobs in the system by cost center, activity and resource. The scheduler can view the entire job plan at a glimpse or manipulate the priority of jobs in any department by changing information in the grid.

This module offers you these features and benefits:

- Optimizes the workflow for any size shop.
- Enables you to manipulate job priorities by department, plan the schedule on a daily or hourly basis and assign jobs to specific individuals, if desired.
- Accepts planned activities and hours from jobs in the cost-based estimating module.
- Provides a variety of screens in which to view the scheduling information for the entire plant or just a single job.
- Generates custom reports for each cost center, as requested.
- Integrates with the Data Collection add-on module to continually update the location of jobs as they move through the shop and alert you when jobs are in danger of missing their promised ship dates.



The Job Status List Screen

“The scheduler can view the entire job plan at a glimpse or manipulate the priority of jobs in any department by changing information in the grid.”