



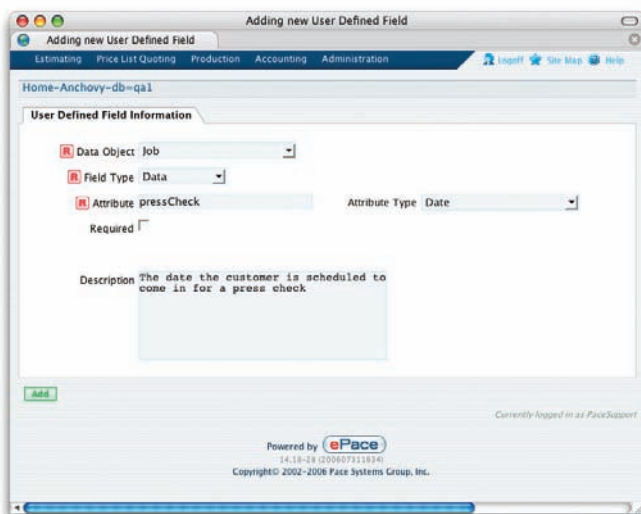
CUSTOMIZATION TOOLKIT

The Customization Toolkit is a suite of add-on modules for advanced ePace users. The modules in this suite enable our clients to customize the system to meet specific needs. This suite is comprised of the following distinct add-on modules that you can license to achieve your specific customization needs.

User Defined Fields/Lists Module

The User Defined Fields/Lists module allows the administrator to add fields and lists to most objects in the ePace management system. This module allows for the addition of various field types including String (Alphanumeric field), Memo, Integer (number), Date, Boolean (Yes/No), email address and URL. You can add these fields and use them on reports, on a screen and in ePacestation to record or track information related to an item that is not standard in ePace. These fields will not be affected by upgrades or other development enhancements over time.

“This suite enables our clients to customize the system to meet specific needs.”



The Add a User Defined Field Screen

User Defined Translations Module

The User Defined Translations module allows the administrator to modify the labels displayed for most of the fields throughout the system via a user interface directly in the ePace application.

User Defined Defaults Module

The User Defined Defaults module allows the administrator to configure the default values associated with most of the fields for an object that you create or duplicate in the system and to control what the system carries forward when you duplicate something.



CUSTOMIZATION TOOLKIT

ePace Application Programming Interface (API) Module

The ePace API module offers you dynamic interaction with the ePace system while maintaining critical business rules of the application for data integrity. This module comes with an SDK and allows the administrator or programmer to interact directly with the ePace business tier to allow an external program or other application to integrate directly with ePace in a real-time mode. It is commonly used to integrate an existing web site to enter orders directly into ePace or to retrieve any information from within the management system and use that information for external purposes. This is an advanced module and one used by customers with an advanced level of programming aptitude. It offers access to the ePace business tier via a web services model and requires someone on staff with programming experience and common knowledge of advanced programming concepts such as XML, Java and SOAP.

“The ePace API module offers you dynamic interaction with the ePace system while maintaining critical business rules of the application for data integrity.”

Email Notifications Module

The Email Notifications module allows the administrator to add notifications to the system that generate an email when certain events occur within the system and to change the behavior of a notification that is currently programmed into the system.

User Defined Forms/Contexts Module

The User Defined Forms and Contexts module allows the administrator to customize many of the forms (screen display), lists, or context menus.