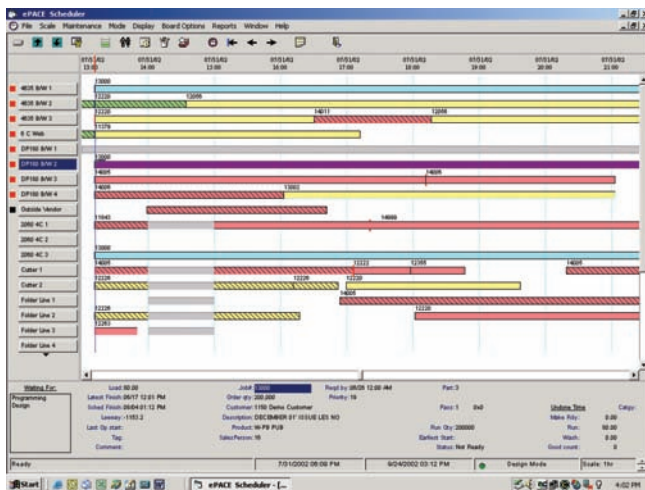




ADVANCED SCHEDULING

The Advanced Scheduling add-on module optimizes the workflow of any size shop. This module is available as a standalone or completely integrated module to allow complete, partial or no integration with other modules in the system. Our Electronic Planning Board (EPB) is a graphical equivalent of the traditional scheduling board used by many printing companies to review the complete plant schedule.

“A graphical equivalent of the traditional scheduling board used by many printing companies.”



The Advanced Scheduler Screen

This module offers you these features and benefits:

- Optimize the schedule with a simple click and drag of the mouse using both forward and backward scheduling methods or both methods simultaneously.
- Plan the schedule for weeks or months in advance and then publish to a live environment.
- Update job planning information for each job, once the schedule is final, to provide the entire plant with the schedule at any time.
- Calculate “what-if” scenarios so you can try several job manipulation options before you adopt the final schedule. Then, refresh data instantly for each job in the Job Control Center when you accept changes.
- View or print custom reports for any cost center for a quick review.
- Find jobs on the schedule with a colored highlight scheme that you can define and match to customers, salespeople or even customer service representatives.
- Interacts with the Cost-based Estimating module to feed the schedule with planned activities and hours when you convert estimates to jobs or when you enter estimated hours into the system.



ADVANCED SCHEDULING

This module offers you these features and benefits:

- Uses the promised date, along with the current workload and the current production plan, to place the jobs in the in-tray where the scheduler can then place them on the schedule board or have them automatically scheduled.
- Works with the Data Collection add-on module to continually update the location of jobs as they move through the shop and alerts the production scheduler when jobs are in danger of missing promised ship dates.
- Integrates with the Inventory and the Purchasing add-on modules to plan stock and outside services and with the Job Planning add-on module to track items that are not scheduled, but rather prioritized, so that they get done on time and in the proper order.
- Includes daily totals of scheduled hours for each cost center and alerts the production scheduler when resources are over-allocated or under-utilized.
- Enables you to add overtime or another shift to relieve the bottleneck or move jobs to another resource or cost center to maintain schedule integrity.
- Enables the scheduler to manipulate the priority of jobs in any department by changing information in the grid or view the entire job's plan at a glimpse. The system displays this quick and easy manipulation or refreshes it, as desired, which enables production management personnel to "keep their finger on the pulse" of the shop and direct traffic for maximum efficiency in today's fast moving workflow.
- Provides a composite view of all the items that affect the schedule for a job, cost center or department in an easy-to-view method to enable you to plan jobs and to manufacture them as efficiently as possible.



“Works with the Data Collection add-on module to continually update the location of jobs as they move through the shop.”